



Choice Neighborhoods Initiative Implementation Grant

People Task Force

Union Square / Robert T. Wolfe Redevelopment

February 18, 2026, at 5 PM at 360 Orange
Street, New Haven, CT



Housing Authority of New Haven



GLENDOWER

Empowering Responsible Development





PART 1 What is the Choice Neighborhoods Initiative

PART 2 What the Implementation Grant Funds

PART 3 People Plan


PART 4 Phasing & Timing

PART 5 What Happens Next?



What is the Choice Neighborhoods Initiative (CNI)?

- A HUD program that invests in People, People, and Neighborhoods together
- Focuses on improving quality of life for current residents
- Supports replacement housing, services, and neighborhood improvements
- ECC and City are joint applicants



Choice Neighborhoods
Choice Neighborhoods program supports locally driven strategies that address struggling neighborhoods with distressed HUD housing through a comprehensive approach.

[Learn more about Choice Neighborhoods](#)

[Home](#) > [Programs](#) > Choice Neighborhoods

Overview

Choice Neighborhoods awards competitive grants to redevelop severely distressed HUD housing, catalyze investments in the surrounding neighborhood, and improve the lives of residents of the HUD housing. To this end, Choice Neighborhoods is focused on three core goals:

1. **Housing:** Replace severely distressed public and HUD-assisted housing with high-quality mixed-income housing that is well-managed and responsive to the needs of the surrounding neighborhood.
2. **People:** Improve the lives of residents living in the target housing related to their income and employment, health, and education outcomes; and
3. **Neighborhood:** Create strong, safe, sustainable and inclusive neighborhoods by investing in physical improvements which attract private investment, spur economic development and improve amenities and services for residents.

Resources

Explore Choice Neighborhoods case studies, webinars, newsletters, and other technical assistance resources including promising practices in neighborhood revitalization, housing redevelopment, and improving resident outcomes in income, employment, health, and education.

- [Choice Neighborhood Newsletters](#)
- [Planning Grant Webinars - coming soon](#)
- [Supporting Economic Success and Stability Toolkit Series](#)
- [Shrinking the Digital Divide Toolkit](#)

People Task Force

The People Task Force is a multi-stakeholder group created to guide, oversee, coordinate housing development, policy, and planning initiatives in a community. Its goal is to ensure that the Union Square initiative meets community needs, regulatory standards, and strategic goals for affordability.



Why Union Square / Robert T. Wolfe?



- Severely distressed public housing and long-term disinvestment
- Strong location near downtown, transit, jobs, and services
- Years of resident engagement and planning already completed

What the Implementation Grant Funds

- Replacement and new mixed income housing
- Resident services education, jobs, health, and housing stability
- Neighborhood improvements streets, open space, safety, connections



Union Square Concept Plan: Overview

Union Square Redevelopment

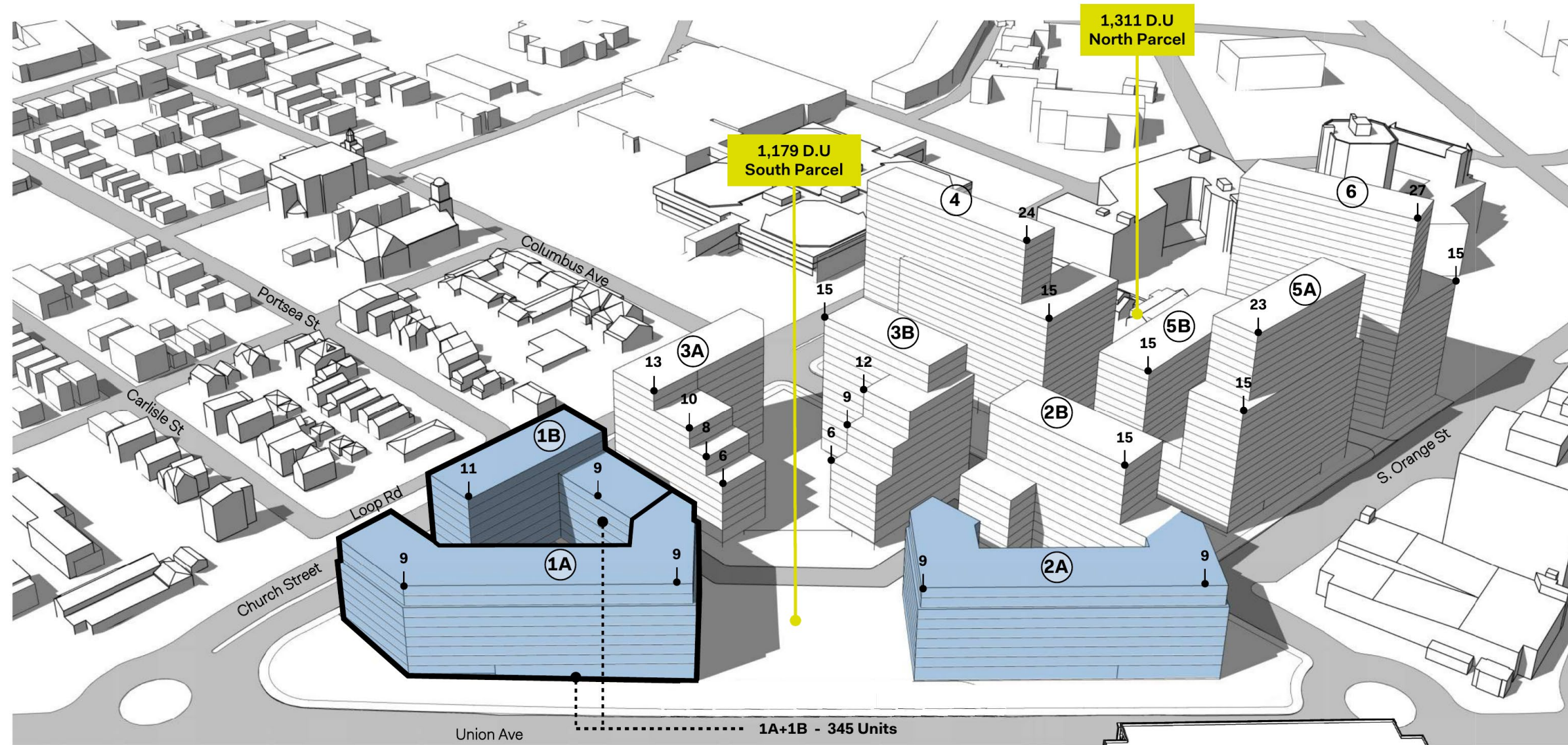
Design Progress
February 11, 2026

Glendower | Elm City Communities | February 11, 2026

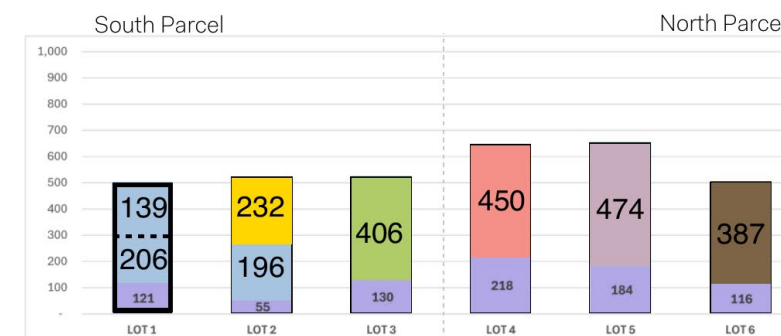
Newman Archi

Phasing Concept: Phase 1 Focus

PROJECT PHASE 1 - 1A+1B



Summary			
Residential Units		Parking Units	
South Parcel:	1,179 Units	South Parcel:	306 Units
North Parcel:	1,311 Units	North Parcel:	518 Units
Total Development:	2,490 Units	Total Development:	824 Units

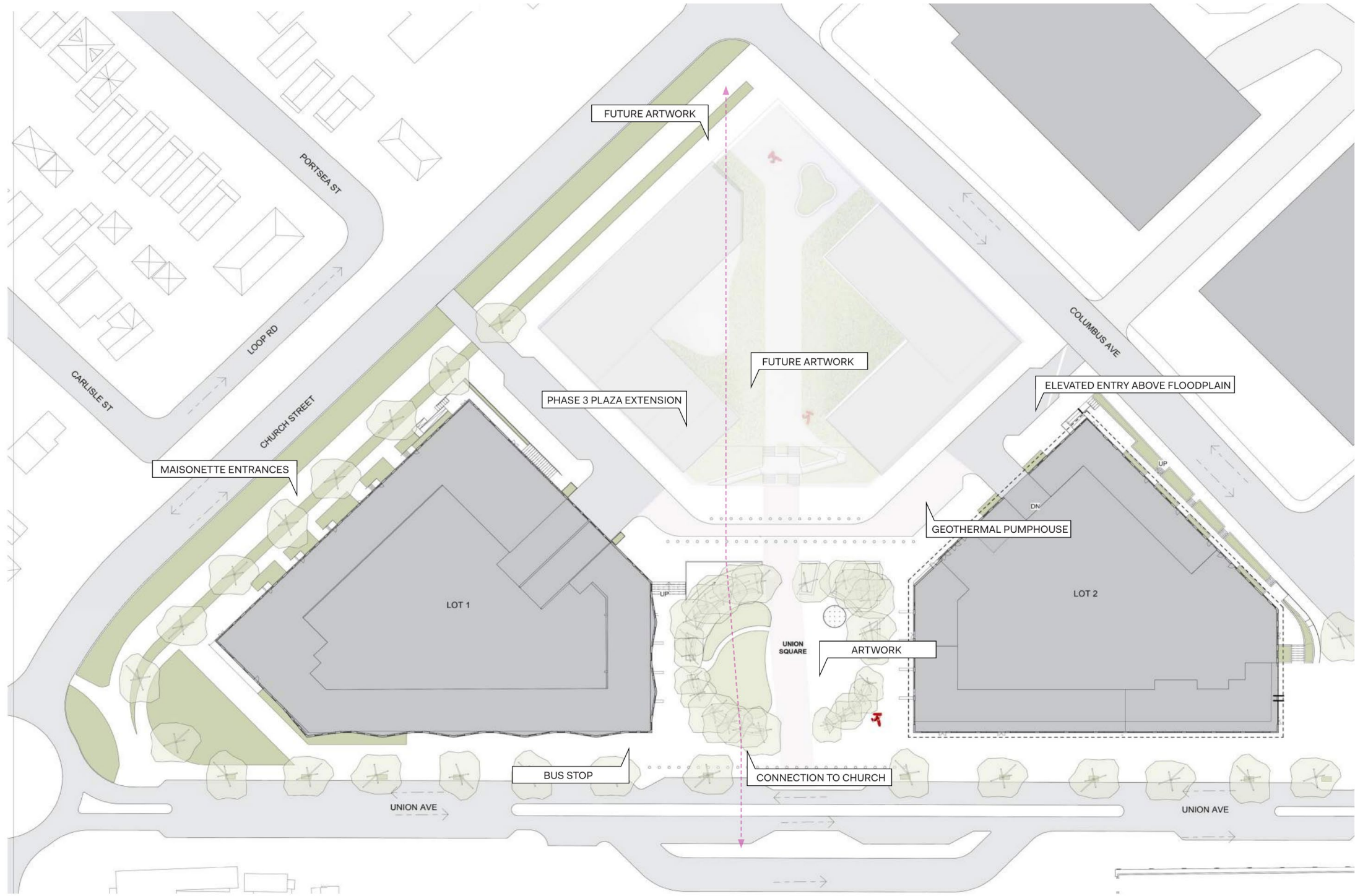


Project Phase 1 – 1A + 1B + 2A

Building	Number of Units
Building 1A	206 Units
Building 1B	139 Units
Building 2A	196 Units
Total Phase 1 Units	541 Units

Site Plan and Public Spaces

SITE PLAN



Who the People Plan Serves

- Robert T. Wolfe residents: seniors and persons with disabilities focused on stability and independent living
- Former Church Street South and Choice Neighborhood families focused on workforce and education outcomes
- Approximately 60–70 households engaged in intensive case management at any given time



People Strategy: Core Goals

- Housing Stability and Successful Return
- Employment, Income Growth, and Economic Mobility
- Education and Youth Development
- Health, Wellness, and Independence



People Plan Partners

Community Action Agency is the People Implementation Entity who will ensure collaboration and coordination among and between partners and case management and stabilization

- Workforce Alliance
- Boys & Girls Club of New Haven
- LEAP
- City Seed
- Education, health, and community partners coordinated by Elm City Communities
- Christian Community Action Agency
- Mary Wade
- Agency o Agency of SC CT
- Yale New Haven Health
- New Haven Adult and Continuing Education
- New Haven Board of Education
- New Haven Early Childhood Learning
- Fair Haven CHC

People Outcomes and HUD Metrics

- 100% of relocating households assigned a case manager
- 90% or more of eligible households successfully return or secure stable housing
- Employment placement, wage growth, and retention for work-ready residents
- Improved education continuity, health access, and quality of life indicators



What Happens Next?

STEP 1

- HUD reviews and scores the application

STEP 2

- If awarded, implementation begins with clear timelines

STEP 3

- Residents remain informed at every step



UNION SQUARE
A CHOICE NEIGHBORHOOD

Questions and Answers?

Thank you for your continued support in our efforts to make a difference in the lives of New Haven residents everyday.